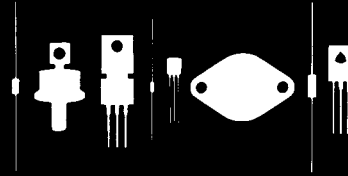


Central  
Semiconductor Corp.  
Central  
Semiconductor Corp.  
Central  
Semiconductor Corp.  
Central™  
Semiconductor Corp.

145 Adams Avenue  
Hauppauge, New York 11788



**C2Z100B THRU C2Z330B**

**2.0 WATT ZENER DIODE**  
**100 Volts thru 330 Volts**

**JEDEC DO-41 CASE**

**DESCRIPTION**

The Central Semiconductor C2Z100B Series Silicon Zener Diode is a high quality epoxy molded voltage regulator for use in industrial, commercial, entertainment and computer applications.

**ABSOLUTE MAXIMUM RATINGS**

Power Dissipation (@  $T_A = 50^\circ\text{C}$ )  
Operating and Storage Temperature  
Tolerance "B Suffix"

**SYMBOL**

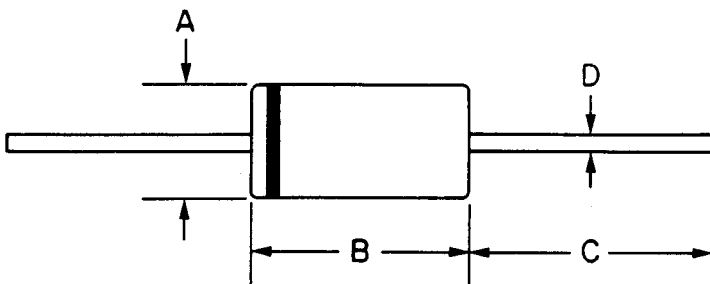
$P_D$  2.0  
 $T_J, T_{STG}$   $-65$  to  $+150^\circ\text{C}$   
 $\pm 5$

**UNIT**

W  
 $^\circ\text{C}$   
%

**ELECTRICAL CHARACTERISTICS** ( $T_A = 25^\circ\text{C}$ ),  $V_F = 1.2\text{V MAX @ } I_F = 1\text{A}$  FOR ALL TYPES.

TYPE	Zener Voltage	Test Current	Maximum Zener Impedance			Maximum Reverse Current		Maximum DC Current
	$V_Z @ I_{Z1}$	$I_{ZT}$	$Z_{ZT} @ I_{ZT}$	$Z_{ZK} @ I_{ZK}$		$I_R @ V_R$		$I_{ZM}$
	Volts	mA	$\Omega$	$\Omega$	mA	$\mu\text{A}$	Volts	mA
C2Z100B	100	5.0	350	3,000	0.25	5.0	76.0	20.0
C2Z110B	110	4.6	450	4,000	0.25	5.0	83.6	18.2
C2Z120B	120	4.0	550	4,500	0.25	5.0	91.2	16.6
C2Z130B	130	3.8	700	5,000	0.25	5.0	98.8	15.4
C2Z150B	150	3.4	1,000	6,000	0.25	5.0	114.0	13.4
C2Z160B	160	3.2	1,100	6,500	0.25	5.0	121.6	12.6
C2Z180B	180	2.8	1,200	7,000	0.25	5.0	136.8	11.2
C2Z200B	200	2.4	1,500	8,000	0.25	5.0	152.0	10.0
C2Z300B	300	1.7	5,000	9,000	0.25	5.0	240.0	6.6
C2Z330B	330	1.5	5,000	9,000	0.25	5.0	260.0	6.0



EPOXY MOLDED CASE WITH TIN PLATED LEADS

DIM	INCHES		MILLIMETERS	
	MIN	MAX	MIN	MAX
A	.080	.107	2.0	2.7
B	.160	.205	4.1	5.2
C	1.0	—	25.4	—
D	.028	.034	0.71	0.86

145 Adams Avenue, Hauppauge, NY 11788 USA  
Tel: (631) 435-1110 • Fax: (631) 435-1824

## OUTSTANDING SUPPORT AND SUPERIOR SERVICES



---

### PRODUCT SUPPORT

Central's operations team provides the highest level of support to insure product is delivered on-time.

- Supply management (Customer portals)
- Inventory bonding
- Consolidated shipping options
- Custom bar coding for shipments
- Custom product packing

---

### DESIGNER SUPPORT/SERVICES

Central's applications engineering team is ready to discuss your design challenges. Just ask.

- Free quick ship samples (2<sup>nd</sup> day air)
- Online technical data and parametric search
- SPICE models
- Custom electrical curves
- Environmental regulation compliance
- Customer specific screening
- Up-screening capabilities
- Special wafer diffusions
- PbSn plating options
- Package details
- Application notes
- Application and design sample kits
- Custom product and package development

---

### REQUESTING PRODUCT PLATING

1. If requesting Tin/Lead plated devices, add the suffix "TIN/LEAD" to the part number when ordering (example: 2N2222A TIN/LEAD).
2. If requesting Lead (Pb) Free plated devices, add the suffix "PBFREE" to the part number when ordering (example: 2N2222A PBFREE).

---

### CONTACT US

#### Corporate Headquarters & Customer Support Team

Central Semiconductor Corp.  
145 Adams Avenue  
Hauppauge, NY 11788 USA  
Main Tel: (631) 435-1110  
Main Fax: (631) 435-1824  
Support Team Fax: (631) 435-3388  
[www.centrasemi.com](http://www.centrasemi.com)

**Worldwide Field Representatives:**  
[www.centrasemi.com/wwreps](http://www.centrasemi.com/wwreps)

**Worldwide Distributors:**  
[www.centrasemi.com/wwdistributors](http://www.centrasemi.com/wwdistributors)

---

For the latest version of Central Semiconductor's **LIMITATIONS AND DAMAGES DISCLAIMER**, which is part of Central's Standard Terms and Conditions of sale, visit: [www.centrasemi.com/terms](http://www.centrasemi.com/terms)